

# Statutory Assessment and Monitoring Service (SAMS) structure chart



**Angela Buxton**

Interim Head of Statutory Assessment and Monitoring Services

## Assessment SAMS officers



**Donna Suttle**

Senior officer for EHCNA



**Lorraine Bramley**

SAMS Officer



**Zara Johnson**

SAMS Officer



**Emma Humphrey-Marsh**

SAMS Officer

## Monitoring SAMS officers



**Karen Charles-Hollis**

Senior officer for Monitoring



**Lauren Milner**

SAMS officer



**Heather Missin**

SAMS officer



**Amy Wright**

SAMS officer



**Angelika Rulewicz**

SAMS officer



**Alison Preston**

SAMS officer

## Transition SAMS officers



**Rachel D'Angelo**

Senior officer for transitions  
Transition complaints



**Josie Crucitti**

SAMS officer



**Michelle Milner**

(caseload covered by  
monitoring team)

## Resolution SAMS officers



**Carrie Page**

Senior Complex Cases and  
Resolution officer



**Jacky Walsh**

Complex cases



**Darrel Fox**

SAMS Officer

## SAMS Senior Admin



**Susan Potter**  
SAMS Data, Processes and  
Information Co-ordinator



**Elsa McLoughlin**  
Senior SAMS Assistant



**Stephanie Taylor**  
SEN finance Officer

## SAMS Assistants



**Luke Walker**  
SAMS Assistant



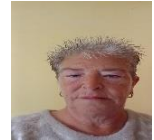
**Lisa Boyes**  
SAMS Assistant



**Lauren Rose**  
SAMS officer



**Shelley Labassi**  
SAMS Assistant



**Vicky Burbage**  
SAMS Assistant



**Irene Akpaloo**  
SAMS Assistant