

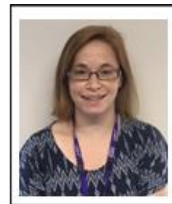
Speech and Language Therapy Service Update

SEND Forum – October 2023



Covering:

- Pre-schools
- Schools
- Secondary
- Special Schools
- PRUs
- Pre-school ASD including assessment
- Specialist Speech
- Specialist Stammering
- Dysphagia
- Deafness
- Voice

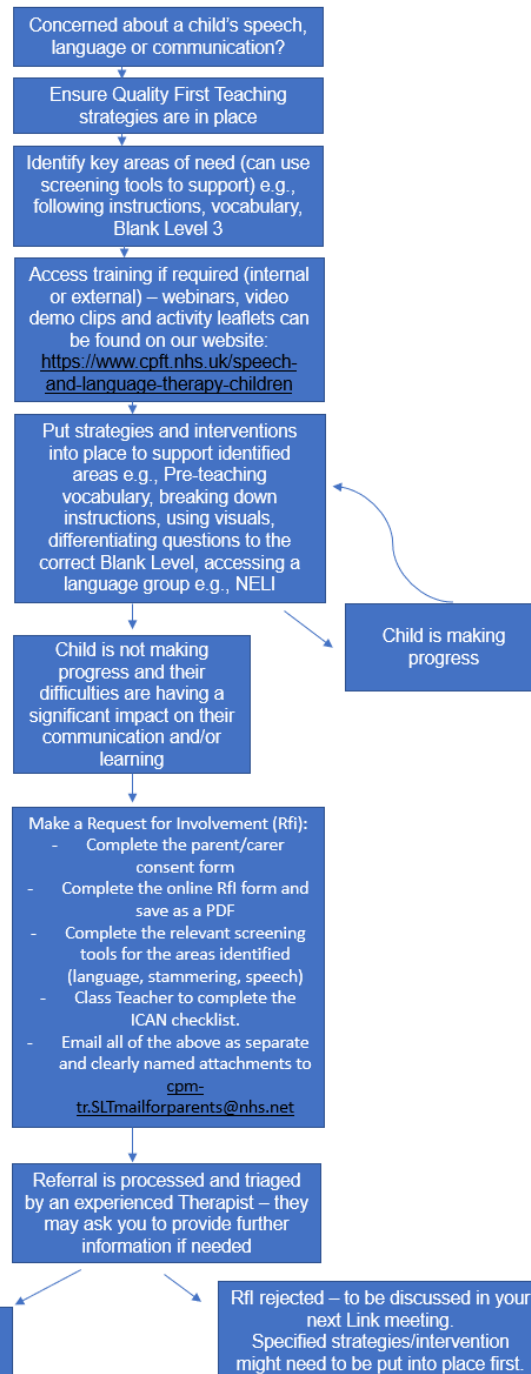


Key changes:

Referrals

- **Screens** now include a scoring section and ideas of what you can do to support – can be used with any child you are concerned about.
- All schools will have an allocated **Link Therapist** (some schools may have a ‘temporary’ link whilst recruitment is ongoing) and can have a termly link meeting to discuss how SLCN support is going in your school. Please also use this meeting to discuss any children you are unsure about referring to reduce referrals made into the service.
- Owl centre supporting speech sound therapy.

Waiting Times: 12 – 15 months – next half-term will be seeing children referred up until end of Oct 22.



See the flowchart in the RFI Guidance for SENCOs 2023 document:
<https://www.cpft.nhs.uk/download.cfm?doc=docm93jjjm4n7535.pdf&ver=10850>

New EYFS children

- **Environment** - https://speechandlanguage.org.uk/media/3245/communication_friendly_environments_checklist_updated.pdf
- **Early language strategies** (see our Let's Start Talking Webinar - <https://www.cpft.nhs.uk/speech-and-language-therapy-late-talkers>). Consider implementing Colourful Semantics as a whole class approach.
- **Communication & interaction:** Intensive Interaction, People Games, Creating Opportunities for communication, support understanding (objects or reference or pictures). See our Early Communication section on our website's toolkit
- **EAL:** <https://speechandlanguage.org.uk/media/1790/supporting-children-learning-english-as-an-additional-language.pdf>
- **Speech** – listening activities. Use speech screen and resources on our toolkit and/or Twinkl to support.

Early years Referrals: Telephone Drop-in

Primary School Age Referrals

INFORMATION FOR SCHOOLS

Information on the updated referral process can be found here as well as guidance on when to refer a child: [Rfi Guidance for SENCos Sept 23.pdf \[pdf\] 215KB](#)

Please ensure you complete the Online RFI Form, parent/carer consent form, ICAN checklist and the relevant screening forms and email to cpm-tr.SLTmailforparents@nhs.net (forms to be found below).

NB: If your child is home-educated and for any other referral queries please email the service at cpm-tr.SLTmailforparents@nhs.net

Online RFI Form

[Parent/carer consent form for Rfi.pdf \[pdf\] 463KB](#)

[ICAN checklist.pdf \[pdf\] 571KB](#) (Class Teacher to complete)

Screening tools (please note if a child is non-verbal these don't need to be completed):

[EYFS & KS1 Language screen pictures.pdf \[pdf\] 1MB](#)

[23/24 EYFS & KS1 Language screen forms \[docx\] 4MB](#)

[KS2 Language screen pictures.pdf \[pdf\] 1MB](#)

[23/24 KS2 Language screen form \[docx\] 66KB](#)

[Speech screen pictures.pdf \[pdf\] 265KB](#)

[23/24 Speech sound screening tool \[docx\] 63KB](#)

[Stammering screening tool.docx \[docx\] 63KB](#)

[About Speech and Language Services](#)

[Speech and Language Therapy Toolkit](#)

[Late Talkers: How to help your child](#)

[Referrals and Drop-ins](#)

[Training and Webinars](#)

Contact Details

- **Opening hours:** 9am-5pm
- **T:** 0300 555 5965
- **E:** cpm-tr.SLTmailforparents@nhs.net
- **F:** <https://www.facebook.com/pborochildrenstherapies/>

<https://www.cpft.nhs.uk/speech-and-language-therapy-referrals>

Speech and Language Therapy Toolkit

Our Speech and Language Therapy Toolkit contains advice, activities and general resources to help with the development of children and young people's speech, language and communication skills.

Early Communication



Early Language



Language



Speech Sounds



Stammering



Reluctant Talkers / Selective Mutism



Voice



Other Useful Links



Our services

Speech and Language Therapy Service-
Children



About Speech and Language Services

Speech and Language Therapy Toolkit

Late Talkers: How to help your child

Referrals and Early Advice Sessions

Training for Professionals

Contact Details

- **Opening hours:** 9am-5pm
- **T:** 0300 555 5965
- **E:** cpm-tr.SLTmailforparents@nhs.net
- **F:** <https://www.facebook.com/pborochildrenstherapies/>

<https://www.cpft.nhs.uk/speech-and-language-therapy-toolkit>