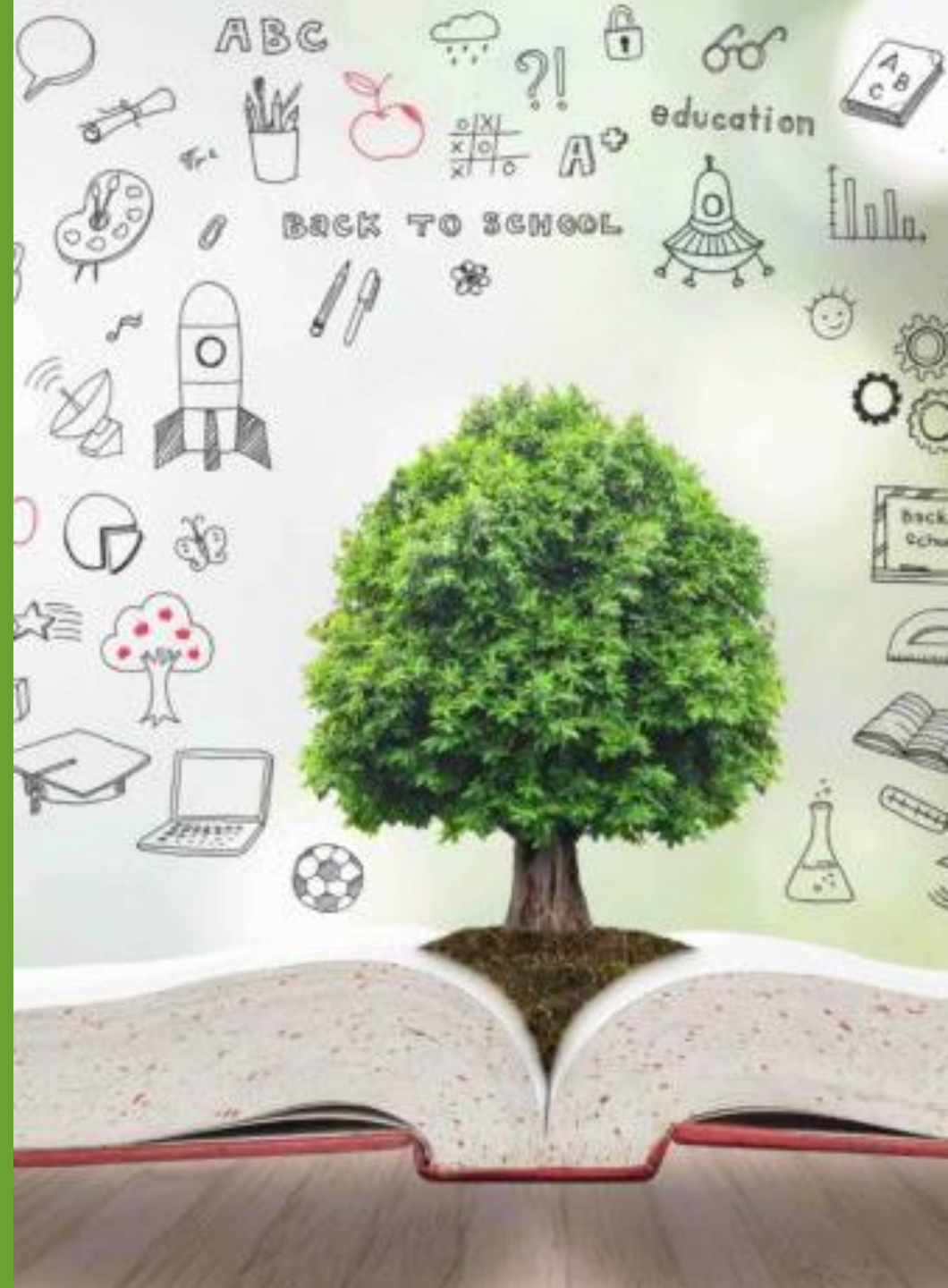


# SEND Forum: LA Updates

James Bird, Head of Service – SEND and Inclusion

January 2025



# SEND System

- Challenging
- Complex
- Hard Work
- Legislative Framework
- Early Identification, Intervention, & Assessment
- SEN Support & EHC plans
- Local Authority / Settings Responsibility
  
- Some report it is broken

**We're in it together!**

Opportunities: Innovation, Collaboration, Policy Development



# LA Updates

- **LA / SEND Senior Structure:**
  - John Greg – Executive Director,
  - Carrie Trill,
  - James Bird – HoS SEND and Inclusion
  - Alison Toulson – Principal EP
  - Katie Barnett – Head of SAMS
  - Jason Wing – Head of Behaviour and Inclusion
  - Gemma Mead – LASS Manager
  - Claire Nunn – Manager of AATS
  - Ben Hotchkin – Manager of SaPS
  - Sarah Bernard – Manager of Portage



# LA Updates

- **SEND Sufficiency**
  - Working Group
- **Nenegate Expansion**
  - 40 Addition Places
- **Workforce Development**
- **Early Identification and Intervention, & Local OAIP Support Document**
- **Accelerated Progress Plan**
- **Ofsted Thematic Reviews - SEND & Out of School**
- **Local Area OFSTED Inspection**



Any Questions

