

Today is the start of...

Deaf Awareness week

Day #1

Deaf Hub

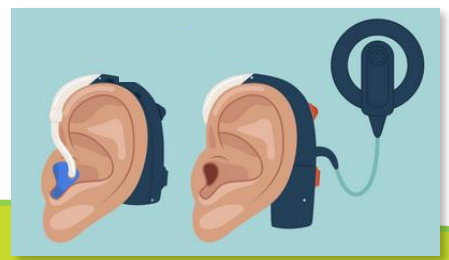
Did you know that St John Fisher is the only secondary school in Peterborough with a Deaf Hub; and Nova is the only Primary school with a Deaf Hub?



St John Fisher
Catholic High School

As well as having a space in school for Deaf students to meet and learn, they have a 'Teacher of the Deaf' (ToD) in school whose job it is to help Deaf students, their parents and their teachers. Other schools have peripatetic or 'peri' ToDs who visit different schools and help lots of Deaf children and young people across Peterborough.

Hearing aid



Cochlear Implant

What is being Deaf?

Deafness, or hearing loss happens when one or more parts of the ear aren't working effectively. Some people are born Deaf, and others become deaf later in life. Some Deaf people use equipment to help them hear better. Hearing aids and cochlear implants are some examples of the equipment used.



The SJF Deaf Hub has a charity that they raise money for. Look out for any events in the future!

Myth Busting!

Daft things people say about Deaf people!

Hearing aids and cochlear implants fix hearing

FALSE

They help but will not ever fix hearing. Lip reading and sign language is also important



All Sign Language is the same everywhere

FALSE

Just like spoken languages, sign language is different in each country. British Sign Language has lots of different regional variations and 'accents' too

Deaf people can't drive

FALSE

They definitely can! Deaf people are often better drivers than hearing people because they are less distracted by noises and pay better attention

Lip reading is hard! Only 30% to 40% of speech sounds can be lip-read even under the best conditions. Lip reading is combined with context, body language and other factors

FALSE

All Deaf people can lip read





St John Fisher
Catholic High School

Deaf Awareness week

Day #2

Talking to Deaf people

At St John Fisher school the students prefer to use spoken English. This is different at Nova primary school where most of the deaf students use sign language.

Some Deaf people just use **British Sign Language (BSL)**, and others prefer to use both a spoken language and BSL together (total communication).

It's always best to ask what type of communication someone uses. If they use some BSL, try learning a few signs!

BSL

British Sign Language with its own grammar and structure (we'll look at BSL tomorrow)

Is there just one type of signing?

SSE

Supported English. Spoken English supported with signs from BSL

Makaton

Uses some signs from BSL but is not a language



Five Top Tips

[Click here!](#)

Talking
to Deaf
people

1

Get attention before you speak. Try waving, tapping the table or their shoulder. Ask what they prefer.

2

Speak normally. Not too slowly or too loud.

3

*Face them when you talk.
Make sure they can see your mouth.*

4

Use your hands. Point at what you're talking about. Try using some BSL.

5

Keep trying and be patient. Try writing a message down or find a photo.



St John Fisher
Catholic High School

Deaf Awareness week

Day #3



St John Fisher
Catholic High School

British Sign Language

Sign Language is a visual way of communicating using the hands, face, and body language. Sign Language is used mainly by people who are Deaf. In Britain BSL is the most used type of sign language. BSL is used by 145,000 people in the UK (2011).

In 2003 BSL was recognised as a language by the UK government.

Deaf Culture

Being Deaf isn't just about hearing ability. For some Deaf people it's also a community with a strong identity and culture. Many members are people who have been deaf all their lives, have deaf friends and family.

GCSE BSL video

Secondary school students in England will soon be able to study a BSL GCSE!

The introduction of the new GCSE is in part thanks to 17-year-old, Daniel Jillings, who has campaigned for the qualification since the age of 12.

Did you know that most of the staff at SJF school have been learning BSL!? Some have BSL qualifications!



Deaf Awareness week

Day #3

What is the sign?



BSL
QUIZ

Thank
you

Sorry

Hello

Want to learn more BSL?

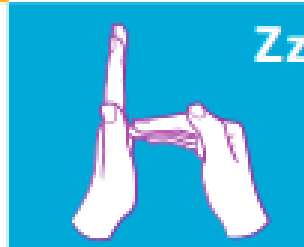
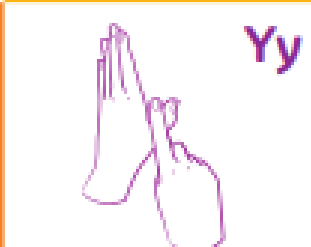
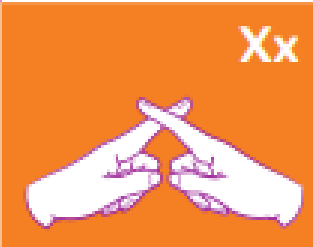
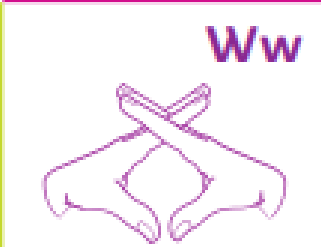
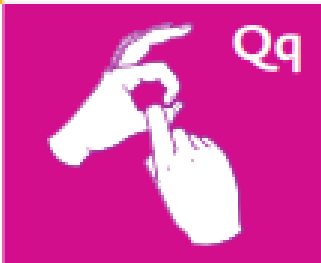
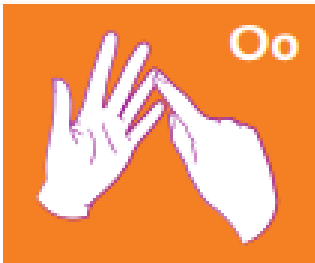
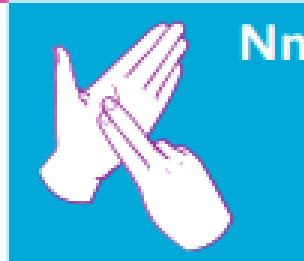
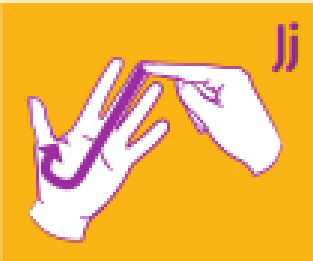
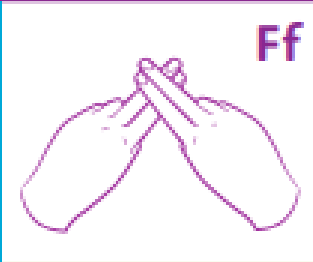
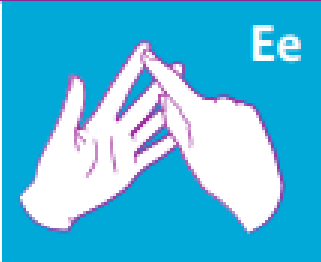
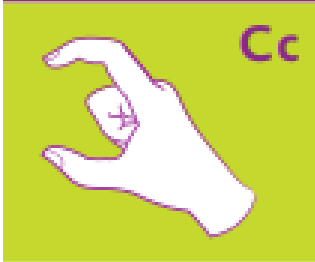
[Click
here](#)

COMMANDING
HANDS 



St John Fisher
Catholic High School

The British fingerspelling alphabet – Right hand



St John Fisher
Catholic High School

[BSL Alphabet video](#)

Watch the
video and
practice
along

[BSL Alphabet \(left
handed\) video](#)

Can you spell
your name?

Deaf Awareness week

Day #4

What do the Deaf students at school want you to know?

"It's okay to be Deaf"

It's not a disability

"Face me when you're speaking"

It helps me if I can see your mouth to lip read

"Being Deaf is a superpower."

I can turn off my hearing aid when my Mum is annoying me

"Sometimes I need more time."

I can get tired from concentrating all day

"Don't look at Deaf people differently. They are the same as you!"

Don't joke about something that a person can't change



St John Fisher
Catholic High School



St John Fisher
Catholic High School

Deaf Awareness week

Day #4

Stuff to remember!

Lack of hearing does not mean lack of ability!

If a deaf person hasn't responded they probably didn't hear you. Get their attention, write it down

Some Deaf people are not part of the Deaf community. That's okay!

Try to learn some sign language. It's an amazing language that you could soon take as a GCSE

BSL Club

If you are a student at SJF, the Deaf Hub is starting a BSL club starting September. It's open to all students!

Email or speak to ToD Mrs Lester if you're interested

